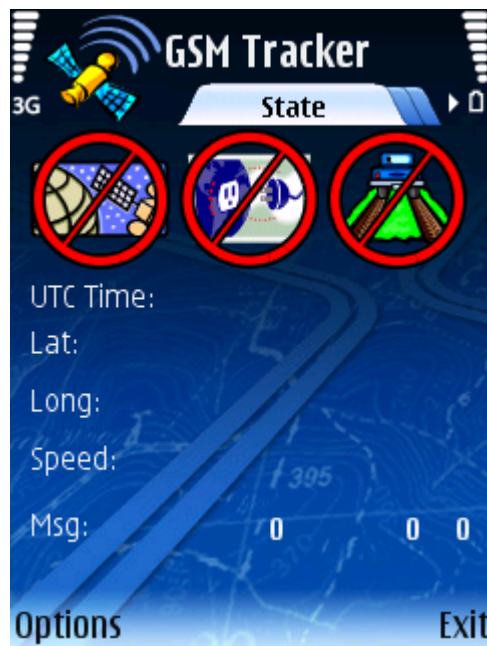


Aspicore GSM Tracker Configuration for GpsGate TrackerOne

Step by step instructions how to setup Aspicore GSM Tracker as a GpsGate TrackerOne tracking unit.



Install and start Aspicore GSM Tracker (v3.16 and later).
Wait a while and press OK to quit the initial splash screens.
An idle main screen appears:



<p>First way "GpsGate.com QuickStart" (enables a user to create a GpsGate.com VehicleTracker trial account and add a device to it in one step.)</p>	<p>Second way Existing GpsGate.com account or a custom server</p>
<p>Navigate to http://gpsgate.com/trackerone using your computer.</p>	<p>Log in to GpsGate Server using your computer. (GpsGate Server installation must be SMS enabled.)</p> <p>Go to <i>Admin, Manage Vehicles, Devices.</i></p>

<p>First way "GpsGate.com QuickStart" (enables a user to create a GpsGate.com VehicleTracker trial account and add a device to it in one step.)</p>	<p>Second way Existing GpsGate.com account or a custom server</p>
<p>Fill the form and click <i>Sign Me Up!</i></p>	<p>Select <i>Add new device</i>.</p> <p>Fill the form, select device type <i>GpsGate TrackerOne</i>.</p> <p>Be sure to enter correct IMEI and phone numbers.</p> <p>(You can ignore the operator, APN and GPRS credentials information now.)</p> <p>Click <i>Save</i> and then click <i>Send settings to device</i>.</p>

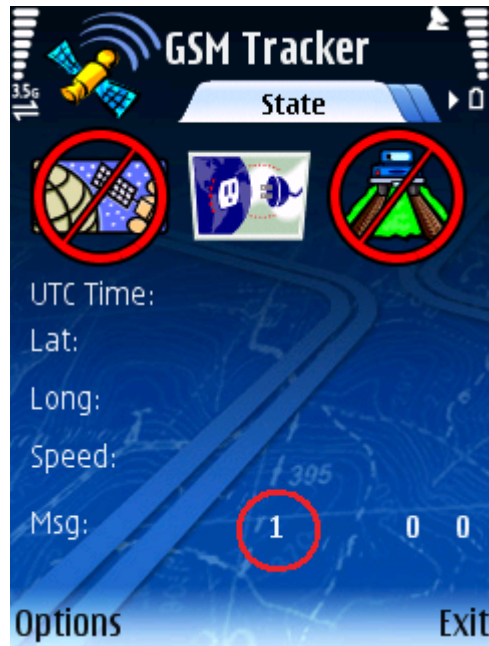
Be ready to select access point from your mobile phone screen.
 (You have 30 seconds time to select the access point after sending the settings.)




Select an Internet access point (not MMS nor WAP).



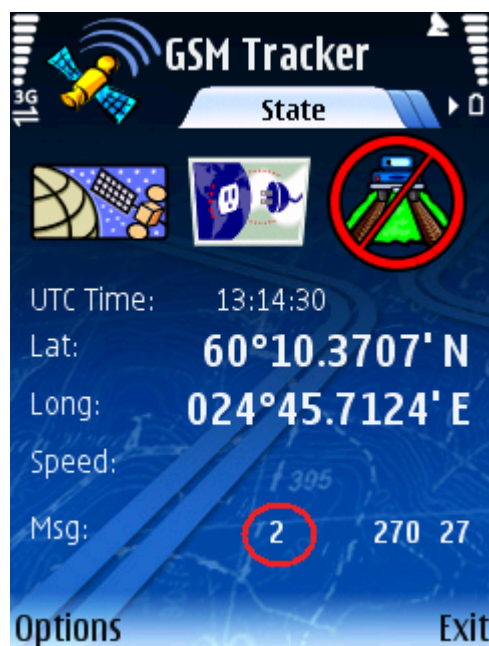
Aspicore GSM Tracker connects to the Internet and sends a reply back to GpsGate Server.



First way	Second way
 <p>(ignore this step)</p>	<p>GpsGate Server shows command status “Complete” (<i>Send settings to device</i>).</p> <p>You can go to <i>Map view</i>.</p>



Aspicore GSM Tracker waits for a GPS signal and sends an initial position to GpsGate Server.





First way	Second way
<p>GpsGate says “Quick Start Sign Up Completed”.</p> <p>Check your e-mail.</p>	<p>(ignore this step)</p>



Now the configuration is done.

Please exit GSM Tracker to store the settings.



You should see your position online at your GpsGate Server Map view.

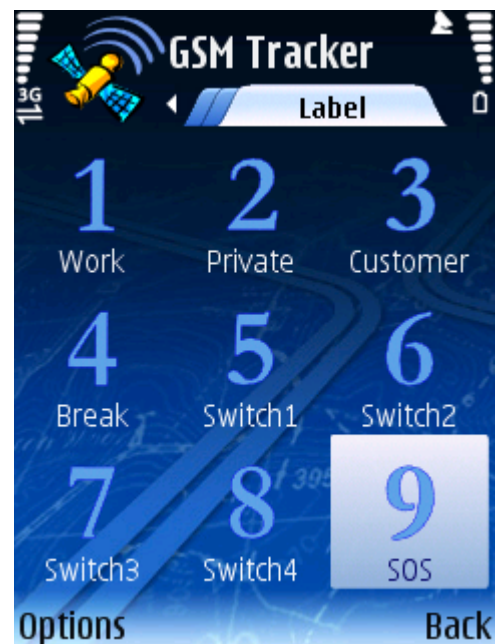
Now you can use command buttons *Start tracking*, *Stop tracking* and *Poll position* in GpsGate Server to monitor phone’s location. (Aspicore GSM Tracker must be running in the target phone. You may enable the autostart to be sure.)

You can turn on the GPS powersave feature from the settings. If you turn it on, then the GPS chip goes to sleep between the position update intervals and the phone battery lasts much longer.

If you want to change the update interval, you can edit the position update settings in the GpsGate Server’s *Track Recorder* tab before clicking the *Start tracking* button.

You can send status signals from mobile phone to GpsGate Server using the buttons in the Aspicore GSM Tracker label tab.

(You can change the label texts from the settings.)



Possible charges

Aspicore GSM Tracker normally warns the user, that opening an Internet connection or sending an SMS may cause a charge into the phone bill. The GpsGate TrackerOne configuration process automatically disables these billable event warnings.

If you use GSM Tracker with GpsGate TrackerOne configuration, be prepared that your **phone bill may include GPRS and SMS charges without further warnings**.

You can estimate the costs from the number of sent GPRS and text messages. You can see the number of sent GPRS messages from the bottom row of the main screen. Sent SMS messages are stored into the *Sent* folder of your phone's *Messaging* app.

Near country borders it may be wise to lock the phone into your home network. You can always exit GSM Tracker, when you are in a situation where you want to avoid all charges.

Troubleshooting

If Aspicore GSM Tracker does not react to the GpsGate *Send settings to device* command, check that the IMEI and phone number are correct and check that GSM Tracker setting *SMS / Configure by SMS* is ON and *Authorised number* empty (or correct number).

The 10 minutes trial period must not have elapsed while sending settings.

To get a quick GPS fix, enable "Assisted GPS" and **disable** "Network based" in phone positioning settings. Check that positioning server is "supl.nokia.com".