

Aspicore GSM Tracker

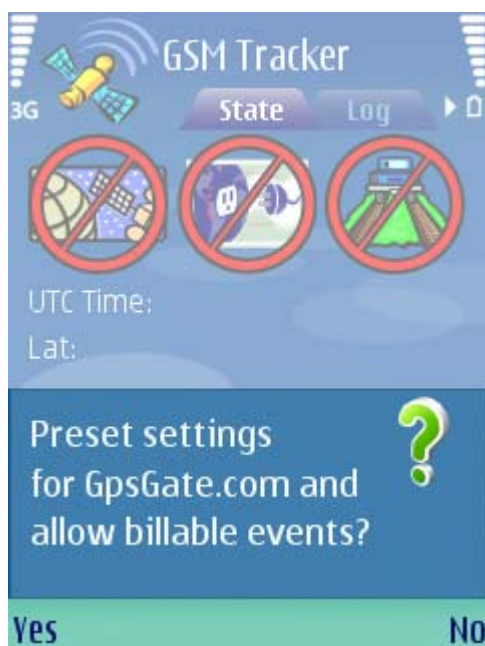
Settings wizard for GpsGate.com

Step by step instructions how to setup Aspicore GSM Tracker for GpsGate.com service. Start Settings wizard from the Option menu.

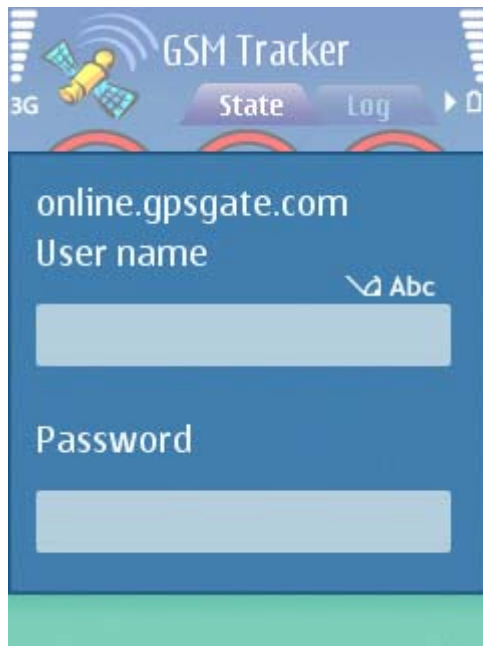


Answer Yes to the confirmation query.

This wizard also disables the billable event warnings, which are otherwise shown each time a new Internet connection is opened.



Enter your GpsGate.com username and password.



Select an Internet access point (not MMS nor WAP).



If the application asks you to select the Bluetooth device, select your GPS from the list and give the passcode. Passcode 0000 usually works. Check your GPS guide.

And you should be connected:



Turn the diagnostics mode on from the settings, if you want to see the detailed login response message from online.gpsgate.com.

Now you are ready to start using the application GSM Tracker! Login to <http://GpsGate.com> to see your position online.

Next time you start the application, the GPS and data connection are created automatically.