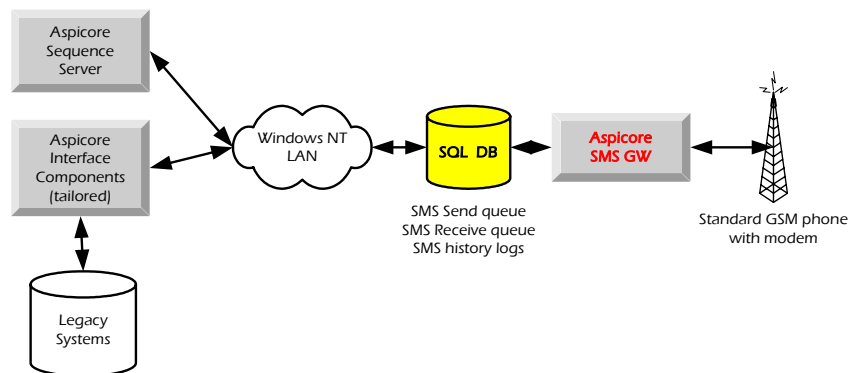


ASPICORE LTD

Aspicore SMS Gateway

Enables your applications with a two-way cellular phone text message interface.



- Software package, which is installed into a Windows computer. The product allows mobile users to enter data with cellular phone text messages into your company applications or to make queries from your company databases. You can also send text messages in real-time to selected cellular phones, when some event occurs in your applications.
- Windows NT service based component which stores the incoming SMS messages from a GSM phone into Receive queue in SQL database and which by means of a GSM phone forwards the SMS messages that have been added into Send queue in SQL database
- SMS Gateway is an independent component whose services can be used from several applications within the customer's information systems through a clear SQL interface
- All SMS traffic can be stored into history logs
- Easy and cost-effective installation and use: no wire connections required from the company to the outside world. The product is installed into Windows NT 4.0 / 2000 / XP workstation or server
- Secure: user authentication based on the phone number in the SIM card

ASPICORE LTD

Veneentekijäntie 7
00210 Helsinki
Finland

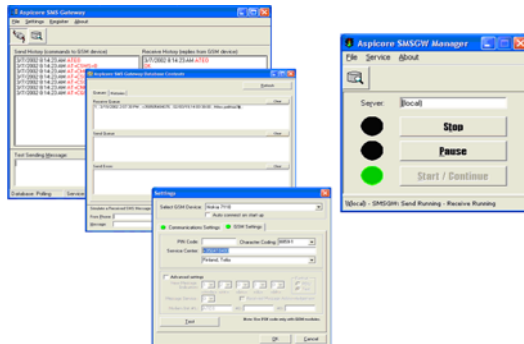
Tel: +358 9 6219 1045
Fax: +358 9 692 2880
Email: info@aspicore.com
www.aspicore.com



ASPICORE LTD

Aspicore SMS Gateway

Enables your applications with a two-way cellular phone text message interface.



SPECIFICATIONS

Hardware

- Any compatible PC with at least 128 megabytes memory, 200 MB hard disk space for the time of installation, a free 9-pin COM port and a CD drive. At least 600 x 800 screen resolution recommended.

Operating system one of the following

- Windows NT 4.0 with Service Pack 6 or later
- Windows 2000 Professional or Windows 2000 Server, with SP1 or later.
- Windows XP Professional

GSM hardware

- Standard GSM phone with modem which can be accessed through PC's COM port. Sufficient level of implementation of ETSI standard GSM 07.05 is required.
- Recommended GSM hardware: Nokia 6100 or Nokia 5100 series phone (or operator variant) and Nokia Data Suite 3.0 with serial cable, Nokia 7110, Nokia 6210 or Nokia 6310(i) with serial cable DLR-3P, Siemens TC35i Terminal.

SMS protocol

- SMS Text Mode interface is used to communicate with the modem. ("AT" commands).
- Supported character sets: GSM default alphabet and ISO 8859 Latin 1
- Maximum message length 160 characters

SQL database

- Microsoft MSDE is included in the package
- The product is also compatible with Microsoft SQL Server 7 or 2000
- The database can be accessed from customer's other software applications to read and write SMS messages. This can be made e.g. through ODBC interface.

Capacity

- Message throughput depends on local GSM operator's SMS service throughput and may vary during different times of day and in different roaming scenarios. Aspicore SMS Gateway handles one message a time. Other messages are waiting in the queue either in the SMS Gateway's SQL database (outgoing messages) or in the GSM operator's service centre (incoming messages).

We also provide software development services to tailor and integrate our SMS Gateway into customer's information systems and GSM operator's systems, if necessary.

ASPICORE LTD

Veneentekijäntie 7
00210 Helsinki
Finland

Tel: +358 9 6219 1045
Fax: +358 9 692 2880
Email: info@aspicore.com
www.aspicore.com

