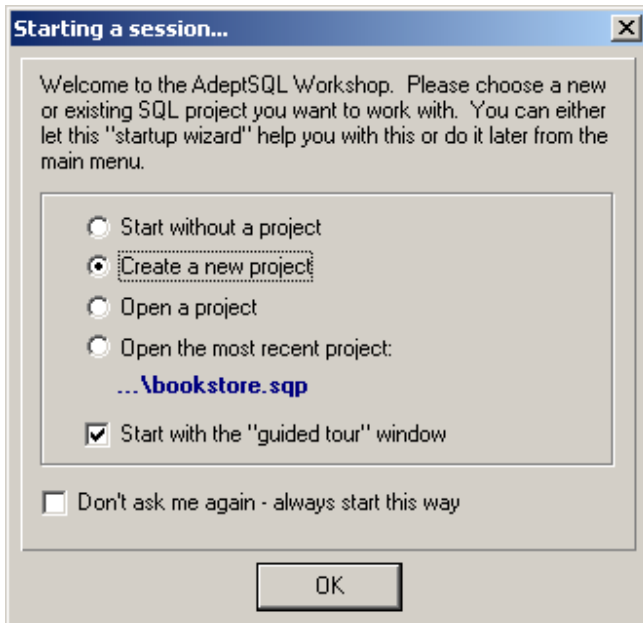
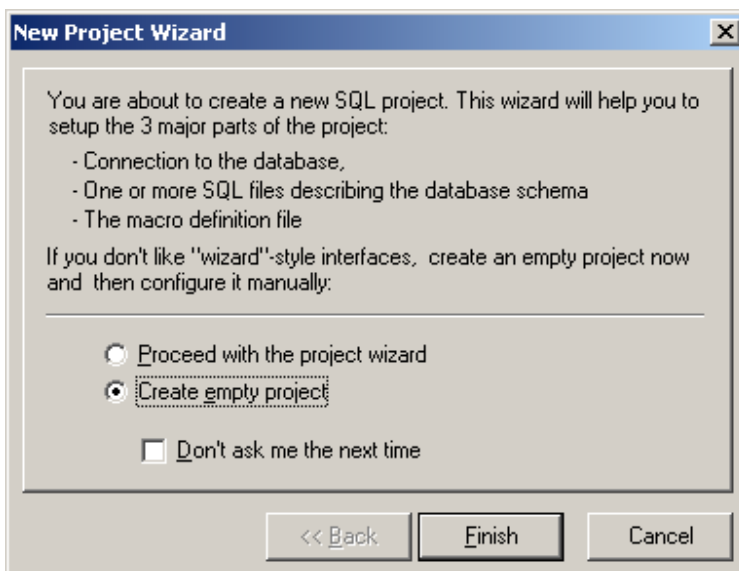


Instructions to connect database and schema using AdeptSQL (30-days evaluation available for download from their website at <http://www.adeptsql.com/download.html>).

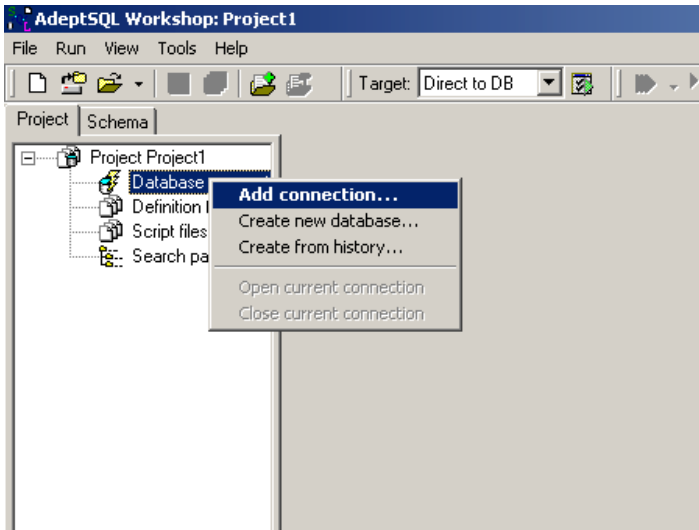
1. Start AdeptSQL, create a new project. Click OK.



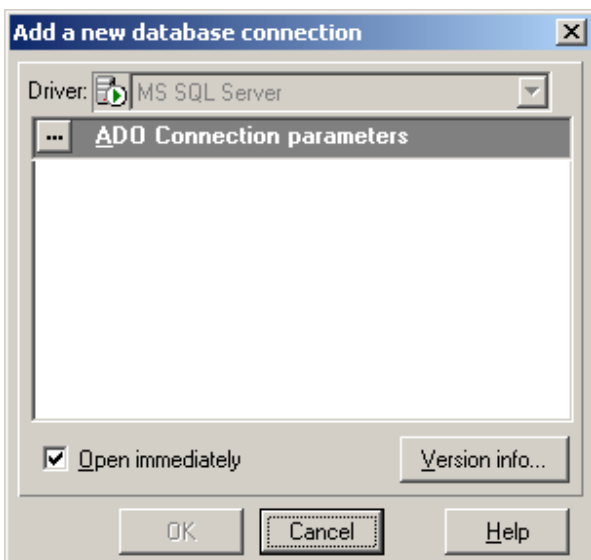
2. Create an empty project.



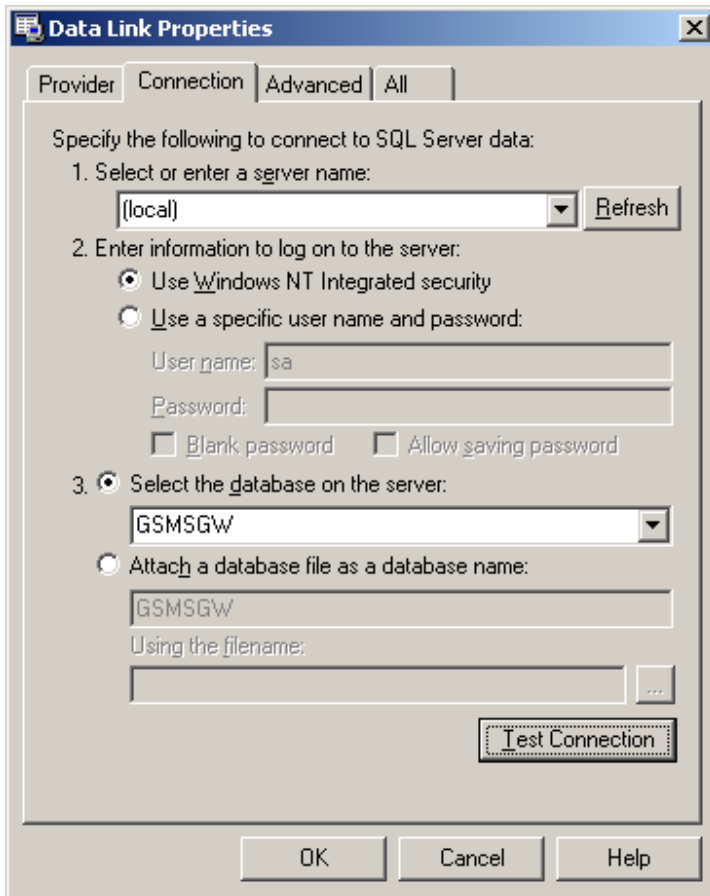
3. Right click on Database connection, and then select Add connection.



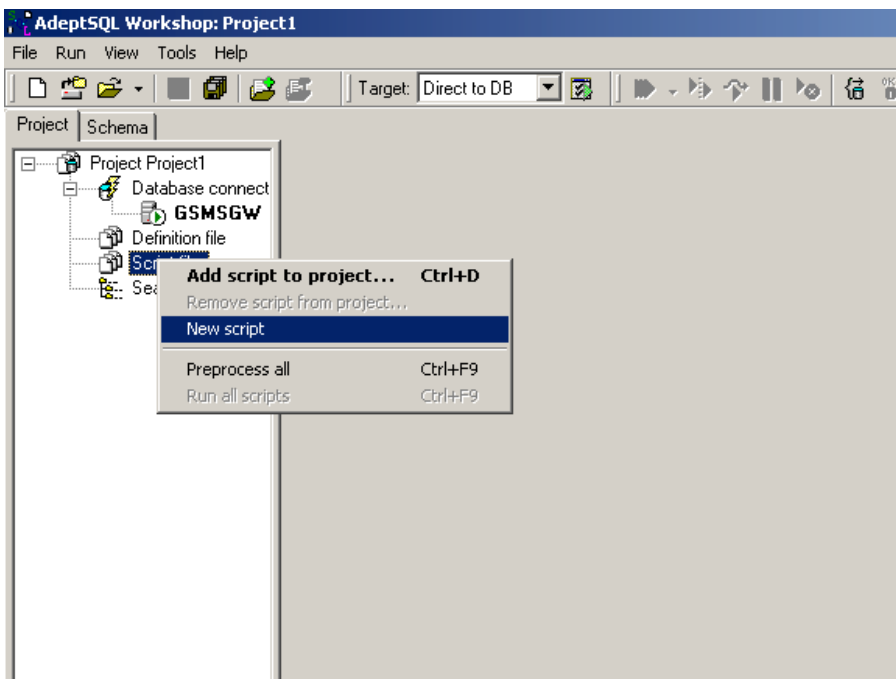
4. Click ADO Connection parameters.



5. Select database server from list or write '(local)' if database is on your local machine. Select Use Windows NT Integrated security and select GSMSGW database. Click OK.



6. Right click Script files and select New script.



7. Write your script on the panel and click green arrow on top to run the script. This example script adds a new row in SEND_QUEUE table and if Aspicore SMS Gateway is running, the message will be sent to given gsm phone.

The SQL clause used in this example is:

```
INSERT INTO SEND_QUEUE (TO_PHONE, MESSAGE) VALUES ('+358407335153', 'Testing sending sms')
```

